



**2010  
VOTER GUIDE  
OSCEOLA COUNTY  
SUPERVISOR OF ELECTIONS  
MARY JANE ARRINGTON**

## LETTER FROM MARY JANE ARRINGTON

Dear Voters,

At the Supervisor of Elections office it is our goal and privilege to provide you with the best possible election services. It is our mission to provide information and to educate registered voters so they can make informed decisions. We strive to make the voting process easy for our citizens and are committed to serving the voters of Osceola County. Thank you for taking the time to register to vote.



*Mary Jane*

### VOTER'S BILL OF RIGHTS

*Each registered voter in this state has the right to:*

1. Vote and have his or her vote accurately counted.
2. Cast a vote if he or she is in line at the official closing of the polls in that county.
3. Ask for and receive assistance in voting.
4. Receive up to two replacement ballots if he or she makes a mistake prior to the ballot being cast.
5. An explanation if his or her registration or identity is in question.
6. If his or her registration or identity is in question, cast a provisional ballot.
7. Written instructions to use when voting, and, upon request, oral instructions in voting from elections officers.
8. Vote free from coercion or intimidation by elections officers or any other person.
9. Vote on a voting system that is in working condition and that will allow votes to be accurately cast.

**You may have other voting rights under state and federal laws. If you believe your voting rights have been violated, please contact the Florida Department of State, Division of Elections, 1-850-245-6200.**

## 2010 ELECTIONS

Primary Election	August 24, 2010
Last Day To Register	July 26, 2010
General Elections	November 2, 2010
Last Day To Register	October 4, 2010

### VOTER RESPONSIBILITIES

*Each registered voter in this state should:*

1. Familiarize himself or herself with the candidates and issues.
2. Maintain a current address with the office of the supervisor of elections.
3. Know the location of his or her polling place and its hours of operation.
4. Bring proper identification to the polling station.
5. Familiarize himself or herself with the operation of the voting equipment in his or her precinct.
6. Treat precinct workers with courtesy.
7. Respect the privacy of other voters.
8. Report any problems or violations of election laws to the supervisor of elections.
9. Ask questions, if needed.
10. Make sure that his or her completed ballot is correct before leaving the polling station.

### NOTE TO VOTER:

**Failure to perform any of these responsibilities does not prohibit a voter from voting.**

#### Osceola County Supervisor of Elections Office Mission Statement:

*"To provide the citizens of Osceola County with quality election services and maintain the integrity of the electoral process. As election professionals, we are the gatekeepers of democracy."*

#### Vision Statement:

*"To build and maintain public trust in the electoral process."*

### **3 WAYS TO VOTE**

*You have several different ways to exercise your right to vote in Florida.*

#### **1. AT YOUR PRECINCT ON ELECTION DAY**

We have had many changes in our methods of voting in recent years, but you may still cast your vote at your local precinct on Election Day. In Osceola County we use paper ballots, where you are required to completely fill in the oval next to your choice. Then insert your voted ballot in to the vote tabulator for your vote to be counted. If you have voted for more than one choice in a race, your ballot will be returned by the vote tabulator for you to correct. If you did not vote in a race your ballot will be accepted. Touch screens are available for those who need assistance and would like to use that method to vote. Voting is simple, quick and easy.



#### **2. VOTING EARLY**

Beginning two weeks before each county-wide election you may vote at one of our designated early voting locations. Locations will be available in different areas of the county for your convenience. Our goal is to make voting convenient for you. You will vote using the same equipment you would use at the polls on Election Day. Early voting sites will be open Monday – Friday, a minimum of 8 hours each day and select hours on weekends.

#### **3. VOTING BY MAIL**

You may request a ballot be mailed to you, and vote at your leisure. Instructions will be included on how to complete it. You may return it by mail, hand deliver it to the elections office or to one of the early voting sites. You may not return your voted ballot to your precinct on Election Day. We must receive your ballot in the Supervisor of Elections office by 7:00 PM on Election Day for it to be counted.

**To request a Vote by Mail ballot simply call us at 407.742.6000 or visit [www.voteosceola.com](http://www.voteosceola.com)**

### **VOTER REGISTRATION INFORMATION**

In order to vote in an election you must be a registered voter 29 days before that election. To register to vote you may complete the application in this brochure or you may obtain an application from the Supervisor of Elections office, any driver's license office, any county library, at WIC and DCF offices and other locations throughout the county or obtain an application at our web site [www.voteosceola.com](http://www.voteosceola.com) or call our office at 407.742.6000 and we will be glad to mail you one. If you are registering for the first time in the State of Florida and mailing your application in, you must include a copy of your Florida Driver's License or Florida ID card to verify your identification.

To be a qualified voter you must be a Florida resident and be 18 years of age. You may pre-register when you are 16 years of age. This gives you the opportunity to vote in your first election as soon as you are eligible.

#### **DO WE HAVE YOUR MOST CURRENT INFORMATION?**

It is important that the elections office has your most current information. Do we have your current address? Has your name changed? Is your signature current? If not, we need to have you update that information. You may make those changes on the enclosed voter registration application and return it to the elections office.

#### **WHY IS MY SIGNATURE IMPORTANT?**

If you are voting by mail or signing a petition we use your signature to verify your identity. We compare your signature to the one we have on file. If your signature does not match what we have on file your vote or petition may not be counted.

During our lifetime our signature sometimes changes, so please make sure our records are current. Your signature can be updated by filling out a voter registration application and returning it to our office.



**Your polling location and all Early Voting sites will be accessible for persons with disabilities.**

## VOTER ID REQUIREMENTS

In order to vote at the polls on Election Day or to early vote you are required by Florida law to have both signature and photo identification. It can be one form of identification, such as a Florida driver's license, Florida ID card or your passport. You may also use more than one form of identification to meet this criteria. For example, if you have a student ID with your picture on it, but not a signature, you would then need to present a second form of ID that has your signature on it.

### EXAMPLES OF ACCEPTABLE IDENTIFICATION

- ✓ Florida Driver's License
- ✓ Florida Identification Card
- ✓ U.S. Passport
- ✓ Military Identification
- ✓ Student Identification
- ✓ Debit or Credit Card
- ✓ Public Assistance Identification
- ✓ Neighborhood Association Identification
- ✓ Retirement Center Identification

All identification presented must be current and valid. For example, your driver's license or passport must be current and not expired.

If you are not able to provide proper identification you will be allowed to vote a provisional ballot.

## WHAT TO EXPECT AT THE POLLS

Polls will be open on Election Day from 7 AM to 7 PM. To determine your polling place, check your voter information notice or contact the Supervisor of Elections office. You may also check the location of your polling location on our web site at [www.voteosceola.com](http://www.voteosceola.com). You will be asked to show photo and signature identification when you go to the polls to vote.

## WHAT TO EXPECT AT THE POLLS CONTINUED

Once your identity has been established, you will be asked to sign the electronic voter identification device or precinct register. If you need assistance in marking your ballot, please inform the poll worker. If you make a mistake in marking your paper ballot, ask for a replacement. You may receive up to two replacements, or a total of three ballots.

## ELECTION INFORMATION

### FLORIDA IS A CLOSED PRIMARY STATE

**What does this mean?** This means that only registered Republicans may vote for Republican candidates and only registered Democrats may vote for Democratic candidates in a primary election. Registered voters with no party affiliation or a minor party affiliation will only be able to vote in non-partisan races.

This means that if you are not affiliated with one of the major parties, you may not be eligible to vote in a primary election.

### UNIVERSAL PRIMARY

If all candidates in a primary race have the same party affiliation and the winner will have no opposition in the general election, all qualified electors, regardless of party affiliation, may vote in the primary election for that office. This is called a Universal Primary Contest.

**Note: Party changes must be made in writing by completing and mailing back a new registration application by the 29th day before an election. If you need further information, call our office, 407.742.6000.**

### ELECTION RESULTS

On Election night, live election results will be easily accessible on the home page of our web site, [www.voteosceola.com](http://www.voteosceola.com). Election results are also available throughout the year and are available on our web site dating back to the 2000 election.

## VOTING BY MAIL ABSENTEE VOTING

### 1. WHO MAY VOTE VIA U.S. MAIL?

If you are a qualified voter in the State of Florida you are entitled to a ballot by mail.

### 2. HOW DO I REQUEST A BALLOT?

A request for a ballot by mail can be made in person at the elections office, by sending us a written request, by telephone, or through our web site at [www.voteosceola.com](http://www.voteosceola.com). Only the voter or a designated member of his or her immediate family or legal guardian can request a ballot by mail. Immediate family means the voter's spouse, parent, child, grandparent, or sibling.

### 3. WHAT INFORMATION MUST I PROVIDE TO RECEIVE A BALLOT BY MAIL?

A request from the voter must provide the following:

- Name of the voter for whom the ballot is requested
- Voter's residence address
- Address where absentee ballot is to be mailed
- Voter's date of birth
- Voter's telephone number (if available)
- Requester's name, if other than voter

If the voter has asked an immediate family member or a legal guardian to request a ballot by mail for them, that designee must provide the above information as well as the following:

- Requester's relationship to the voter
- Requester's address, if other than the voter
- Requester's drivers license number (if available)
- Requester's signature (written request only)
- Photo and signature identification (requests made in person)

## VOTING BY MAIL ABSENTEE VOTING

### 4. WHEN CAN I REQUEST A BALLOT BY MAIL?

You may request a ballot by mail at any time. Requesting a ballot to vote by mail may be made for a specific election or for all elections which you are eligible to vote in for the next two general elections.

### 5. HOW AND WHEN WILL I RECEIVE MY BALLOT BY MAIL?

Ballots that are sent by mail are mailed out approximately 3 weeks prior to each election for those voters who have a request on file in our office. You may request a ballot by mail up to 5:00 PM on the 6th day before an election.

**A voted ballot must be received in our office by 7:00 PM on Election Day. A completed mail ballot cannot be accepted at a polling place on Election Day.**

### SAMPLE BALLOTS

Approximately 3 weeks prior to the election you will be mailed a sample ballot. This ballot will be an example of the ballot you will receive at the polls and will contain the races and issues you will be voting on in your precinct. We encourage you to review it and bring it with you when you vote. If you do not receive one, we advise you to notify the elections office so we can confirm your address.



## HOW TO MARK YOUR OSCEOLA COUNTY BALLOT

Osceola County uses a marksense paper ballot that is optically scanned by an Accu-Vote voting machine to count your ballot.

**USE A BLACK OR BLUE INK PEN  
TO MARK YOUR BALLOT**

**CORRECTLY  
FILL IN THE OVAL  
NEXT TO YOUR CHOICE**

<b>U.S. PRESIDENT</b>	<b>-Vote for ONE-</b>
<input checked="" type="radio"/>	<b>YOUR CHOICE</b>
<input type="radio"/>	<b>NOT Your Choice</b>

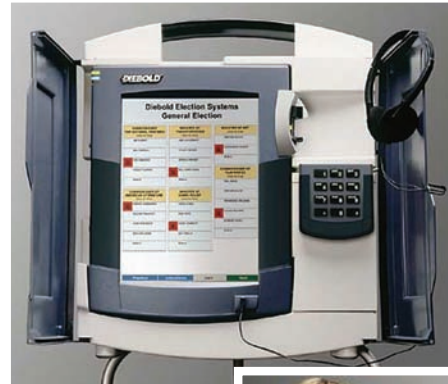
### IF YOU MAKE A MISTAKE

Please do not erase or use liquid correction fluid if you make a mistake on your ballot. If you are voting at your polling place, ask for another ballot. If you are voting by mail, please call the elections office at 407.742.6000 for instructions.



## TOUCHSCREEN VOTING SYSTEM

The elections office provides touchscreen voting to aid persons with disabilities. Touchscreen voting allows blind and visually-impaired voters to vote independently. Persons who are visually-impaired may access the system's audio feature. A touchscreen voting system will be available at each early voting site or polling location.



### **NEED A DEMONSTRATION?**

Demonstrations of election equipment are available.

If you, your club or organization would like to schedule a demonstration,

**Call: 407.742.6000**

## BECOME AN ELECTION WORKER

The Supervisor of Elections has opportunities available for dedicated, civic minded individuals to participate in the electoral process. More than 800 of your fellow citizens participate in Election Day activities. Election workers earn \$150 - \$260 for each election they work depending on the position.

Interested in becoming an Election Worker? We have opportunities available for the following:

- ☑ Election Day Workers – work at the polls.
- ☑ Early Voting Election Workers – work up to two weeks prior to the election at one of our Early Voting locations.
- ☑ Phone Bank Operators – answer caller’s questions as part of our phone bank on Election Day.
- ☑ Work in and around the office assisting us with the facilitation of each election.

Your first step is to attend an Election Worker Orientation meeting. You may register by calling our office at 407.742.6000 or register online at [www.voteosceola.com](http://www.voteosceola.com).

## POLLING LOCATION CHANGES

When the Supervisor of Elections moves a polling place or precinct, the supervisor will mail a notice about the change in location to the registered voter a minimum of 14 days before an election.

The supervisor will also place a notice of the change of the polling place or location, with a clear description of the new voting location, in a newspaper of general circulation in Osceola County not more than 30 days but not less than 7 days prior to an election.



## ADOPT-A-PRECINCT

The Supervisor of Elections office has started a new Adopt-A-Precinct program where a group, business or organization can “adopt” a polling location and provide the people to serve as poll workers for that location. The Supervisor of Elections office will then give that group the money that would have gone to the individuals working the polling place. The organization would have the opportunity to make \$3,600 to \$5,500 in an election cycle working two elections at the adopted precinct depending on the size of the precinct or precincts at the polling location. The group can either use that money for their organization or donate it to another worthy cause.

The Supervisor of Elections office will also display the name of the group, business or organization outside the polling place and the business, group or organization’s name will be added to our Community Partners Wall at the Supervisor of Elections office. All the group’s that participate in the Adopt-A-Precinct program will also be highlighted on our web site and spotlighted in our new quarterly electronic newsletter.

## ADOPT-A-PRECINCT

- ☑ All workers must be registered to vote in Osceola County.
- ☑ A group will need a person to coordinate and at least 9 to 15 volunteers, depending on the size of the precinct adopted.
- ☑ Each polling site is required to have a minimum of one bilingual person. If the organization cannot provide this person, the elections office will assist the group by providing a bilingual staff person.
- ☑ The Supervisor of Elections office will provide all training, which is mandatory. Training will be done before each election and lasts, on average, from three to eight hours.

## ADOPT-A-PRECINCT CONTINUED

- ✓ Poll workers will begin working at 6:00 AM. The length of the day varies by election, but is usually two hours or so after the polls close at 7:00 PM.
- ✓ Poll workers are asked to bring food and necessities with them for the entire day, as they may not leave the polling place during the day.
- ✓ Poll workers are asked to wear comfortable, neat, casual business attire. Workers may wear shirts with the business' or organization's logo, but they will not be allowed to wear any electioneering or political attire.

If your group, business or organization is interested in adopting a precinct, please call 407.742.6000. We are very excited about this program and hope you will take advantage of this great opportunity to serve your community.

## VOTER FEEDBACK

Our office is dedicated to receiving feedback from all voters. Beginning with the 2010 Elections, Voter Feedback cards will be available to every voter at each polling location. We genuinely want to hear from you. Make sure you receive your feedback card and tell us about your experience at the polls. Your comments allow our office to provide you the best level of service possible.

**Vote Osceola**  
SUPERVISOR OF ELECTIONS  
OSCEOLA COUNTY  
FLORIDA  
MARY JANE ARRINGTON

We are dedicated to improving the election process in Osceola County. Your suggestions and comments will enable us to better serve you. Please complete this form and return it to our office.

**HOW ARE WE DOING?**  
It is very important to us that your experience with our office be one that is positive, productive, and professional. Your comments are extremely important. They will identify areas we might improve our service to meet your needs. If personally taking such comment into my staff and I take them very seriously. As we look to improve our services, it is our goal to meet the needs of the voters of Osceola County. We follow up on all comments.

Thank you for your feedback.

The service you received was:  Excellent  Good  Fair  Poor  
Were you greeted in a friendly manner?  Yes  No  
Were election workers knowledgeable and helpful?  Yes  No  
Was the facility satisfactory?  Yes  No

Location: \_\_\_\_\_  
Comments (Optional): \_\_\_\_\_

**2010 ELECTION DATES**  
PRIMARY ELECTION August 24, 2010  
GENERAL ELECTION November 2, 2010

**2012 ELECTION DATES**  
PRIMARY ELECTION August 28, 2012  
GENERAL ELECTION November 6, 2012

Interested in learning more about elections in Osceola County or becoming an Election Worker?  
Visit our web site at [www.VoteOsceola.com](http://www.VoteOsceola.com)

MARY JANE ARRINGTON  
SUPERVISOR OF ELECTIONS  
2509 E. Ida Broun Memorial Hwy.  
Kissimmee, FL 34744-9804

2509 East Ida Broun Memorial Hwy.  
Kissimmee, FL 34744  
407.742.6000 • [www.VoteOsceola.com](http://www.VoteOsceola.com)

## EDUCATION OUTREACH PROGRAMS

The Osceola County Supervisor of Elections office is committed to informing the community about the election process. We have several exciting educational outreach programs we are using in the schools and we also have programs such as our new Adopt-A-Precinct program that are geared toward civic and community organizations as well.

**Request A Speaker:** The Supervisor or a staff member from the Elections Office would be happy to visit your classroom and talk about the election process.

**Student Elections:** We would be glad to come to your school and help with Class Officer elections, Homecoming Court elections or even hold a mock election on an important issue at your school.

**“Duck for President”:** This wonderful book shows elementary age children the importance of voting and how the process works. There are also lesson plans so the students can hold their own election just like Duck!

**Uncle Sam:** We have our very own Uncle Sam who is available for events at your school. He will be helping with school elections, making presentations and is also a narrator for Duck. He comes complete with costume and coloring and activity pages for the younger students. He will also be a mainstay at voter registration drives.

**Voter Registration Drives:** Did you know students are eligible to pre-register to vote at age 16? We will be in the schools at various times during the year to hold voter registration drives, so please sign up today to schedule one for your school!

**Sunshine State Young readers:** This is a wonderful program where students vote for their favorite Sunshine State book. We will bring our election equipment to your school and help with the election process.

## CIVIC OUTREACH PROGRAMS

**Request A Speaker:** The Supervisor or a staff member from the Elections Office would be happy to visit your group or organization during a meeting or function and talk about the election process. Demonstrations of the touch screen voting equipment are also available.

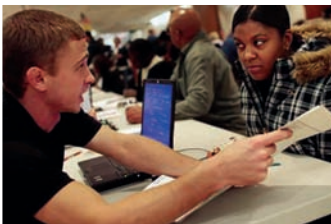
**Adopt-A-Precinct:** This is a wonderful opportunity for civic groups, businesses and organizations to help with the election process. A group would “adopt” a precinct and provide the people to staff that precinct. The Supervisor of Elections office will then pay your organization instead of the individual workers. Your group could make \$3,600 to \$5,500 in an election cycle working two elections in that precinct.

To schedule an Outreach program, please call 407.742.6100 or visit our web site [www.voteosceola.com](http://www.voteosceola.com)



## VOLUNTEER OPPORTUNITIES

Your Supervisor of Elections is always looking for enthusiastic volunteers to assist us in our Community Education and Outreach activities. We are searching for individuals to aid us in staffing our Education and Outreach booths, assisting with school elections and other opportunities in which we are invited to participate. If you are interested in serving your community in this capacity, please call our office at 407.742.6100.



## SPECIAL IDENTIFICATION REQUIREMENTS

If you are registering by mail, you have never voted in Florida, and you have not been issued a Florida driver's license, Florida identification card, or Social Security number, you will be required to provide additional identification prior to voting the first time. To ensure that you will not have problems when you go to vote, you should provide a copy of the required identification listed below at the time you mail your voter registration application.

**You may provide a copy of one of the following photo identifications (ID) that includes your name and picture:**

- U.S. Passport
- Buyers Club ID
- Military ID
- Retirement Center ID
- Neighborhood Association ID
- Public Assistance ID
- Employee Badge or ID
- Debit/Credit Card
- Student ID

**Or, you may provide a copy of one of the following documents that contains your name and current residence address:**

- Bank Statement
- Government Check
- Other Government Document
- Paycheck
- Utility Bill

PLEASE BE SURE TO SEAL ALL OPEN SIDES WITH TAPE TO ASSURE YOUR IDENTIFICATION DOCUMENT COPIES DO NOT GET LOST - DO NOT STAPLE -

↓ FOLD THIS PANEL DOWN FIRST ↓

Or, if you are one of the following persons, you are exempt from having to provide a copy of an ID at this time.

These exemptions are:

- Persons 65 years of age or older
- Persons with a temporary or permanent physical disability
- Members of the active uniformed service or merchant marine who, by reason of such active duty, are absent from the county
- Spouse or dependent of an active uniformed service member or merchant marine who, by reason of the active duty or service of the member, is absent from the county
- Persons currently residing outside the U.S. who are eligible to vote in Florida

**DO NOT SEND ORIGINAL IDENTIFICATION DOCUMENTS TO THE SUPERVISOR OF ELECTIONS OFFICE.**



INTERESTED IN KNOWING MORE ABOUT ELECTIONS?

VISIT OUR WEB SITE AT

[WWW.VOTEOSCEOLA.COM](http://WWW.VOTEOSCEOLA.COM)

*Vote  
Osceola*



---

SUPERVISOR OF ELECTIONS  
OSCEOLA COUNTY  
MARY JANE ARRINGTON

---

**Osceola County Supervisor of Elections  
Office Mission Statement:**

“To provide the citizens of Osceola County with quality election services and maintain the integrity of the electoral process. As election professionals, we are the gatekeepers of democracy.”

**Vision Statement:**

“To build and maintain public trust in the electoral process.”

*Vote  
Osceola*



2509 East Irlo Bronson Memorial Hwy.  
Kissimmee, FL 34744  
407.742.6000  
[www.voteosceola.com](http://www.voteosceola.com)